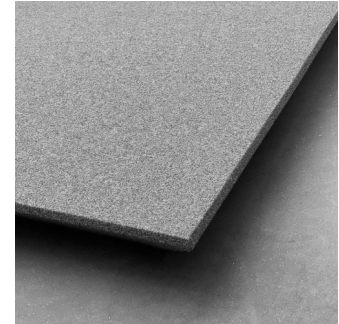
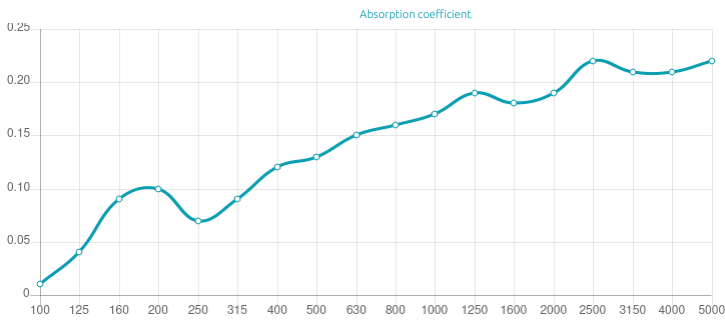
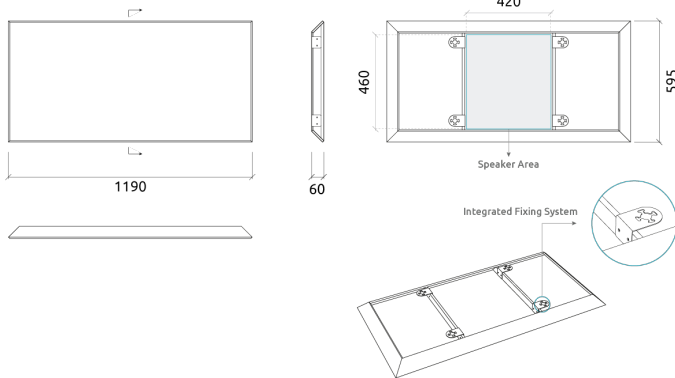


Performance



Technical Information



Features

Available fire rate:  
FG | Furniture Grade

- b>Sparta Speaker Cover  
Materials:
- The panels are wrapped in carefully selected fabric, that has a minimal effect on speaker output performance.
  - Marine grade plywood structural frame

Dimensions | 595x1190x60mm

Compatible with built-in speakers up to the following sizes:

- Vertical panel - 460 x 420mm
- Horizontal panel - 420 x 460mm

Integrated Fixing System

Dimensions:

FG - WF | 1190x595x60mm | 3.26 Kg

Sparta is an acoustic panel with a simple design, that provides a broadband absorption range.

Sparta is aimed for people who want to maintain neutral aesthetics in their home cinema but require a proper acoustic solution. In line with this concept, Artnovion also created a visually identical solution that allows for speaker integration.

This product is the result of extensive research and development into acoustically transparent fabrics, to create a speaker cover solution with minimal interference to the speakers' response pattern.

**Product finishes**

(FG - WF) Weave Fabric Finishes



FG | (TP106) Terracotta



FG | (TP107) Teal



FG | (TP108) Emerald



FG | (TP109) Seashell



FG | (TP110) Steel



FG | (TP111) Iron



FG | (TP112) Citron



FG | (TP113) Fandango



FG | (TP114) Carmine



FG | (TP82) Amber



FG | (TP83) Persimmon



FG | (TP84) Persian Red



FG | (TP85) Claret



FG | (TP86) Cobalt



FG | (TP87) Tardis Blue



FG | (TP88) Alabaster



FG | (TP89) Greige



FG | (TP90) Smoke



FG | (TP91) Licorice



FG | (TP92) Lemongrass



FG | (TP93) Avocado



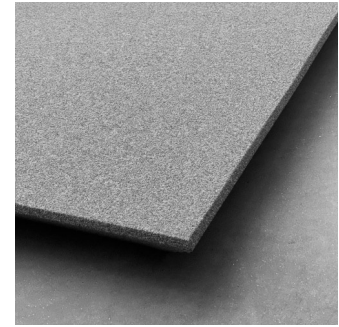
FG | (TP94) Snow



FG | (TP95) Khaki



FG | (TP96) Taupe



**Purpose**

- Hiding loudspeakers
- Provide continuous design

**Recommended for**

- Home Cinema