

Antares W - Bass Trap - Corner



The Corner Bass Trap is the latest in low frequency absorption. This elegant panel integrates a tuneable membrane over a sealed volume, containing a high performance acoustic core. A secondary posterior compartment positions a high density velocity core in the high pressure zone of the room. The panel is completely tuneable, by means of an adjustable weighted membrane, allowing to pin-point the performance of the panel to a target frequency.

The panels' tuneable membrane works in a similar way to a speaker cone, allowing for a much superior - and controlled - performance. A central mass is supported by an elastic membrane - This mass can then be altered to change the resonant frequency of the membrane, stepping the peak performance of the Trap from 58 to 82 Hz.

T.P.D.A. - Artnovion technology

Features

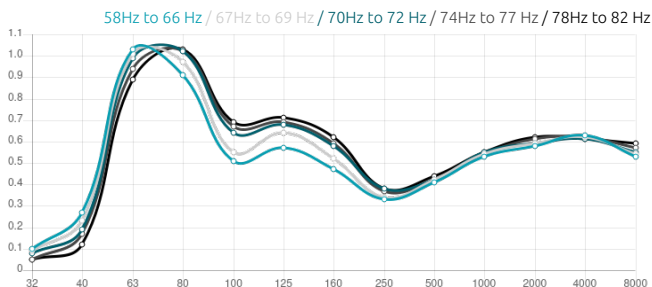
Type:
 TPDA - Artnovion Technology
 Tuneable Pistonic Diaphragmatic Absorber

Tuneable Absorption Range:
 58Hz to 82Hz.
 Hz-by-Hz fine-tuning

Purpose

- Room mode control
- Bass ratio control
- Low frequency RT reduction
- Improving low frequency response
- Reducing low frequency time decay

Performance



The design of these acoustic cores creates a trap with unprecedented performance and unique calibration – Absorbing more - and from a lower frequency - than anything else on the market.

The front of the panels clips in to the bass trap body, leaving easy access to the membrane. The panel is installed on wall corners, with a simple cleat system.

Making the most of our new membrane technology employed in the Sub Trap Range, we are launching an improved version of our Bass Trap HP. The new membrane brings new fine-tuning possibilities and even more performance than before. It has been redesigned, forgoing the rounded sides to include a new dedicated sealed-cavity Helmholtz resonator at the back – and also elegantly hiding its cleat fixing system.

This product is available in the following Fire Rate:
 FG | Furniture Grade

PRODUCT COMPOSITION:

- Antares W - Bass Trap - Corner | Natural Wood
- Natural wood
 - Acoustic fabric
 - Marine-grade plywood structural frame
 - Calibrated cell acoustic foam

- Antares W - Bass Trap - Corner | Lacquered Wood
- Lacquered wood
 - Acoustic fabric
 - Marine-grade plywood structural frame
 - Calibrated cell acoustic foam

Dimensions:
 Antares W - Bass Trap - Corner | 595x595x156mm

Artnovion useful tools:

[Impulso Acoustics App](#)

High Accuracy Acoustic App Engineered by Artnovion

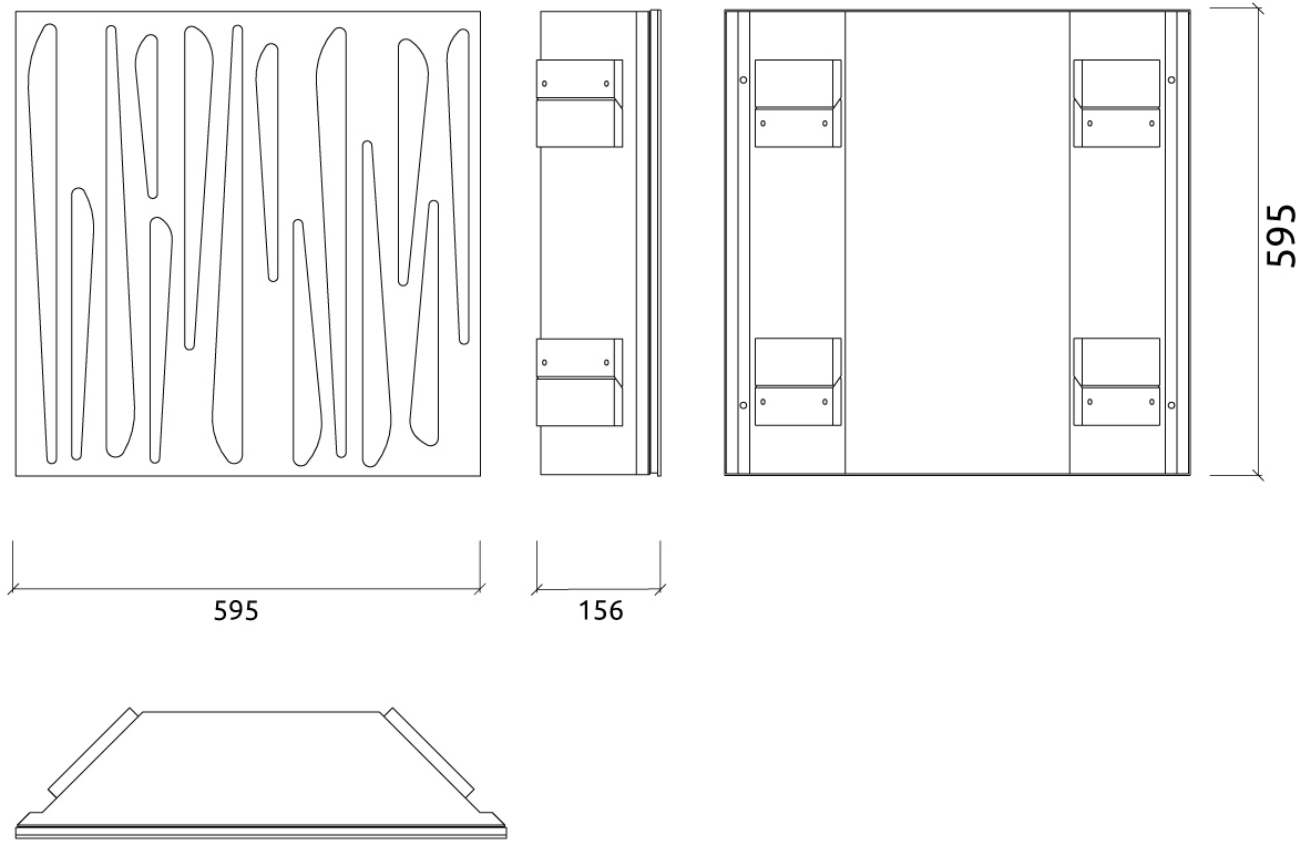
[Project Support link](#)

This form is a tool designed to assist professionals plan and configure acoustic treatment projects.

[Feel free to compare our products - Click here](#)

Select two models and we'll provide you the information you need to make the best decisions.

[Product Support Link | Team contact.](#)



Add-ons

Installation:

Mechanical

595x595x156mm | 9.38 Kg

Front



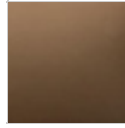
FG | (L24) Ruby Red

Retail code:
5272512800152412



FG | Custom RAL

Retail code:
5272512800100012



FG | (L10) Bronze

Retail code:
5272512800160512



FG | (L06) Noir Vintage

Retail code:
5272512800150412



FG | (L20) Grey Aluminium

Retail code:
5272512800151112



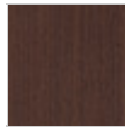
FG | (L22) Jet Black

Retail code:
5272512800151312



FG | (L21) Gloss White

Retail code:
5272512800151212



FG | (W08) Wenge Natura

Retail code:
5262512800140812



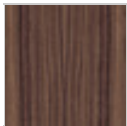
FG | (W11) Okoumé Natura

Retail code:
5262512800141112



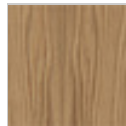
FG | (W12) Ash Natura

Retail code:
5262512800141212



**FG | (W09) Black Walnut
Natura**

Retail code:
5262512800140912



FG | (W13) Oak Natura

Retail code:
5262512800141312



FG | (W17) Black Ash

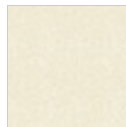
Retail code:
5262512800141712

Fabric



FG | (T0272) Snow White

Retail code:
1012512800127212



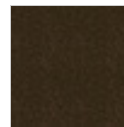
FG | (T0273) Light Ivory

Retail code:
1012512800127312



FG | (T0274) Vanilla Beige

Retail code:
1012512800127412



FG | (T0275) Earth Brown

Retail code:
1012512800127512



FG | (T0276) Grey Beige

Retail code:
1012512800127612



FG | (T0277) Mink Grey

Retail code:
1012512800127712



FG | (T0278) Ash Grey

Retail code:
1012512800127812



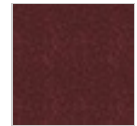
FG | (T0279) Anthracite Grey

Retail code:
1012512800127912



FG | (T0280) Bottle Green

Retail code:
1012512800128012



FG | (T0281) Wine Red

Retail code:
1012512800128112



FG | (T0282) Violet Blue

Retail code:
1012512800128212



FG | (T0283) Ink Black

Retail code:
1012512800128312